

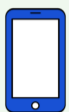


National Runaway Safeline  
**CRISIS SERVICES SNAPSHOT**  
DATA COLLECTED JANUARY 1, 2023 - DECEMBER 31, 2023

**NEW JERSEY**

TOP 5 COUNTIES: Essex (17%), Camden (12%), Middlesex (8%), Bergen (7%), Burlington (6%)

Total Crisis Contacts  
**442**



Hotline Calls  
24%



Live Chats  
73%



Texts  
3%

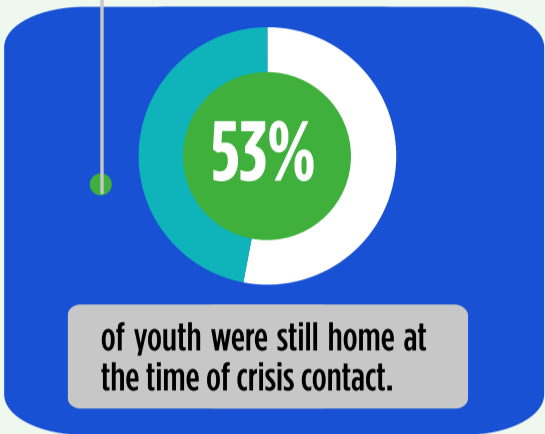


Emails  
<1%



Forum Posts  
0%

0 Home Free Tickets Issued



**Youth Status at Time of Contact**

38%	Youth In Crisis	10%	Runaway
36%	Contemplating Running	5%	Asked to Leave
11%	Homeless	1%	Suspected Missing

**Top Issues**



88%  
Family Dynamics



30%  
Mental Health



29%  
Emotional/Verbal Abuse

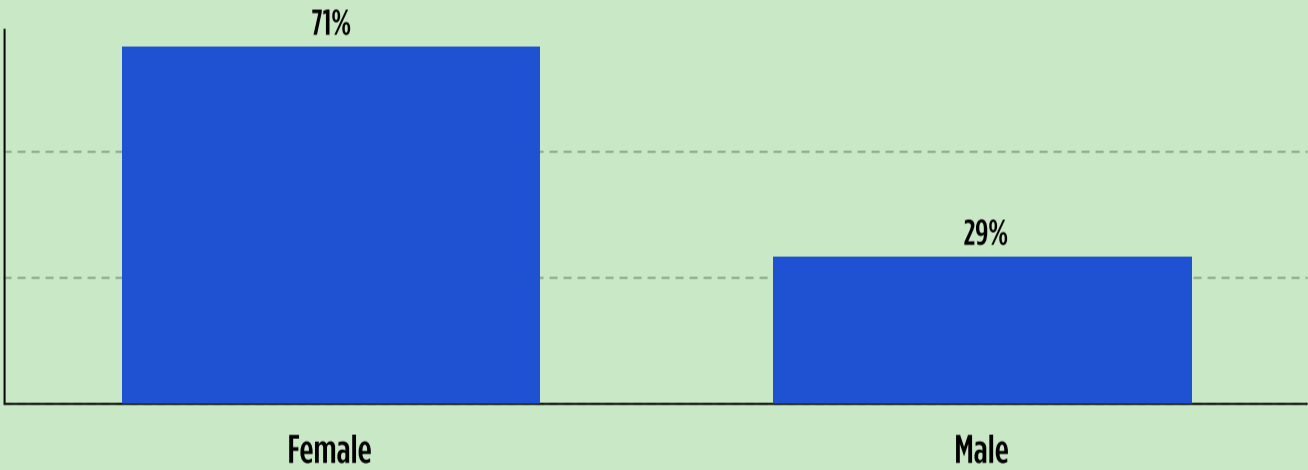


25%  
Economics

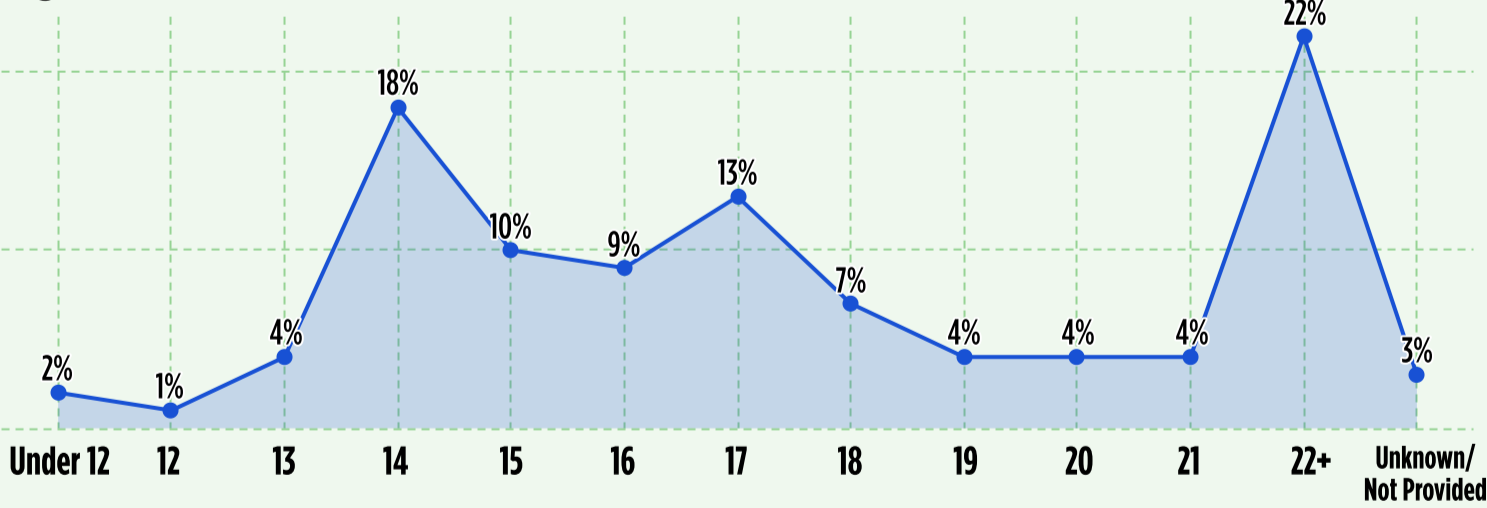


22%  
Peer/Social Issues

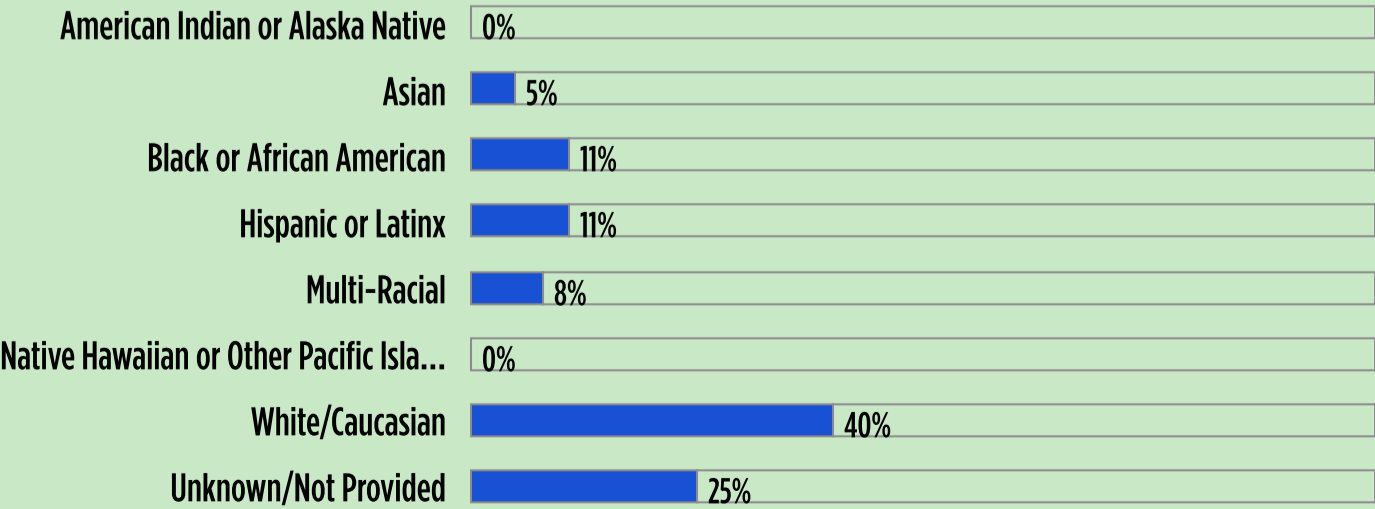
**Sex**



**Age**



**Race and Ethnicity**



**FOR MORE INFORMATION VISIT 1800RUNAWAY.ORG/DATA**

FOLLOW @1800RUNAWAY ON INSTAGRAM, FACEBOOK, & THREADS OR @NATIONALRUNAWAYSAFELINE ON TIKTOK & YOUTUBE