



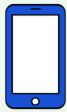
National Runaway Safeline
CRISIS SERVICES SNAPSHOT
DATA COLLECTED JANUARY 1, 2023 - DECEMBER 31, 2023

RHODE ISLAND



TOP 5 COUNTIES: Providence (62%), Washington (19%), Newport (13%), Kent (3%), Bristol (3%)

Total Crisis Contacts
68



Hotline Calls
10%



Live Chats
87%



Texts
3%

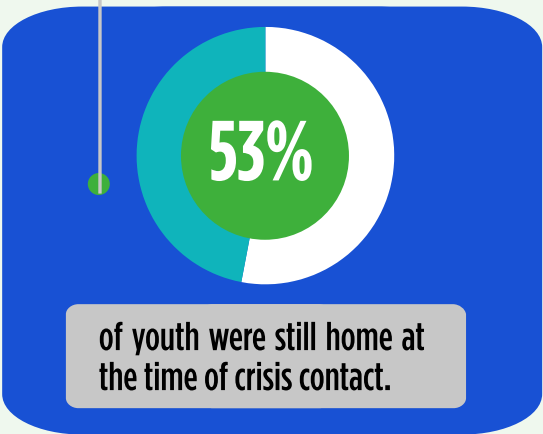


Emails
0%



Forum Posts
0%

1 Home Free Tickets Issued



Youth Status at Time of Contact

58%	Youth In Crisis	0%	Homeless
31%	Contemplating Running	0%	Asked to Leave
11%	Runaway	0%	Suspected Missing

Top Issues



70%
Family Dynamics



27%
Emotional/Verbal Abuse



23%
Economics

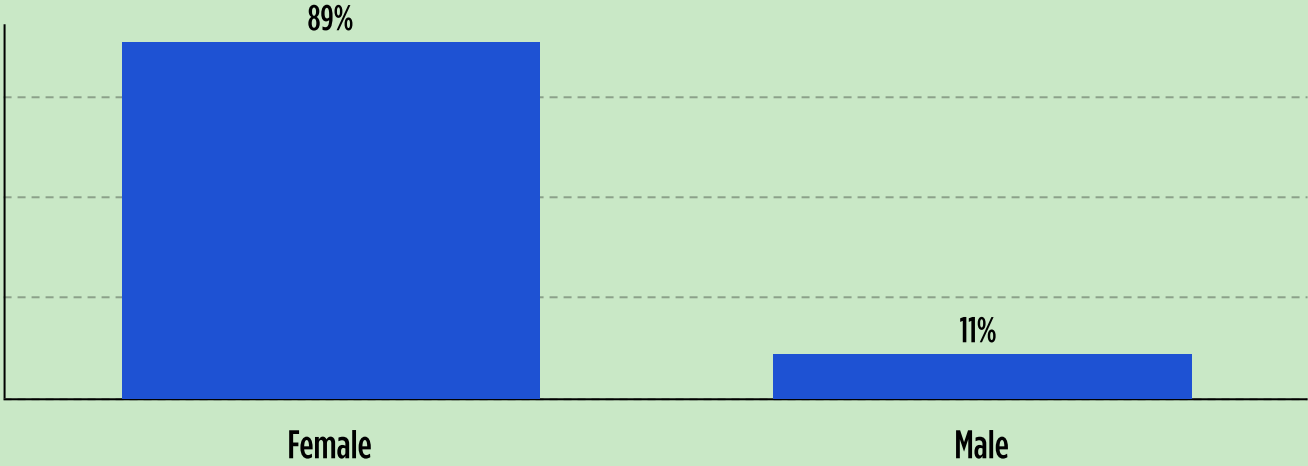


20%
Physical Abuse/Assault

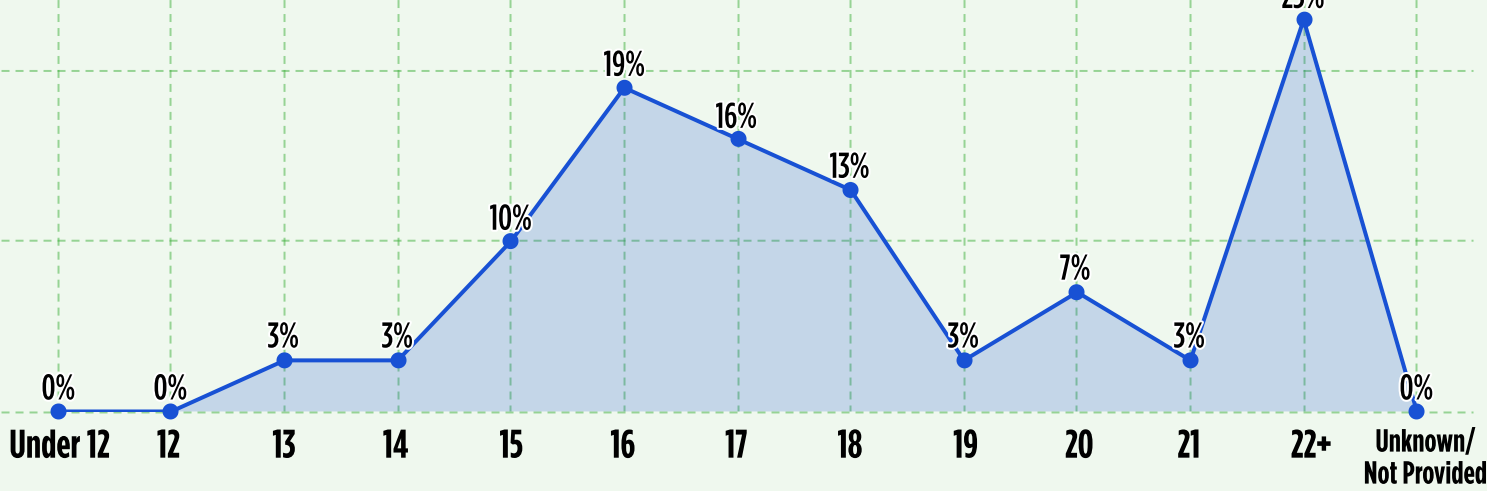


17%
Transportation

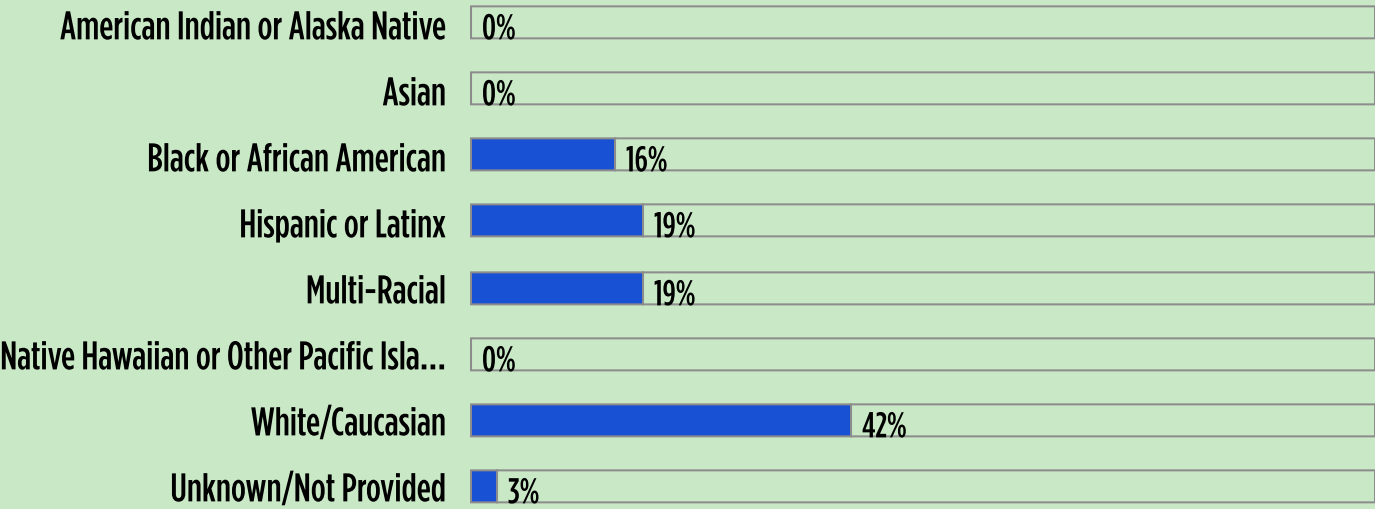
Sex



Age



Race and Ethnicity



FOR MORE INFORMATION VISIT 1800RUNAWAY.ORG/DATA

FOLLOW @1800RUNAWAY ON INSTAGRAM, FACEBOOK, & THREADS OR @NATIONALRUNAWAYSAFELINE ON TIKTOK & YOUTUBE