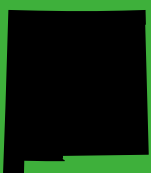




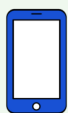
National Runaway Safeline  
**CRISIS SERVICES SNAPSHOT**  
DATA COLLECTED JANUARY 1, 2024 - DECEMBER 31, 2024

# NEW MEXICO



TOP 5 COUNTIES: BERNALILLO (28%), LUNA (13%), SAINT FE (7%), DONA ANA (7%), SAN JUAN (6%)

Total Crisis Contacts  
**159**



Hotline Calls  
33%



Live Chats  
45%



Texts  
22%

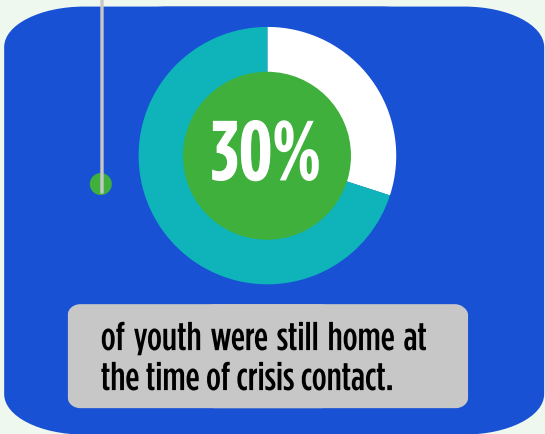


Emails  
0%



Forum Posts  
0%

3 Home Free Tickets Issued



### Youth Status at Time of Contact

42%	Youth In Crisis	17%	Homeless
20%	Contemplating Running	4%	Asked to Leave
17%	Runaway	0%	Suspected Missing

### Top Issues



70%  
Family Dynamics



36%  
Economics



30%  
Transportation

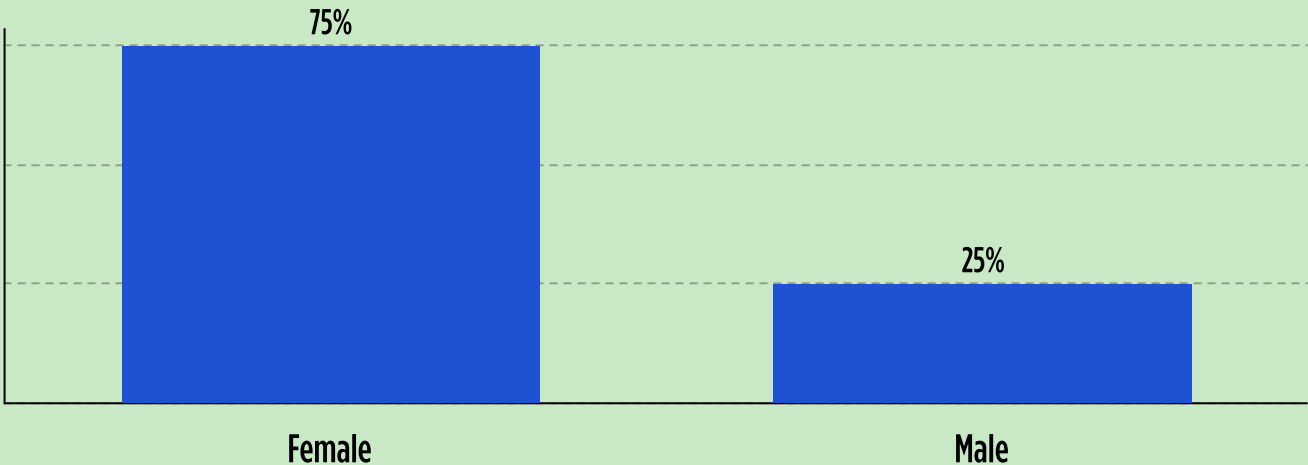


22%  
Emotional/Verbal Abuse

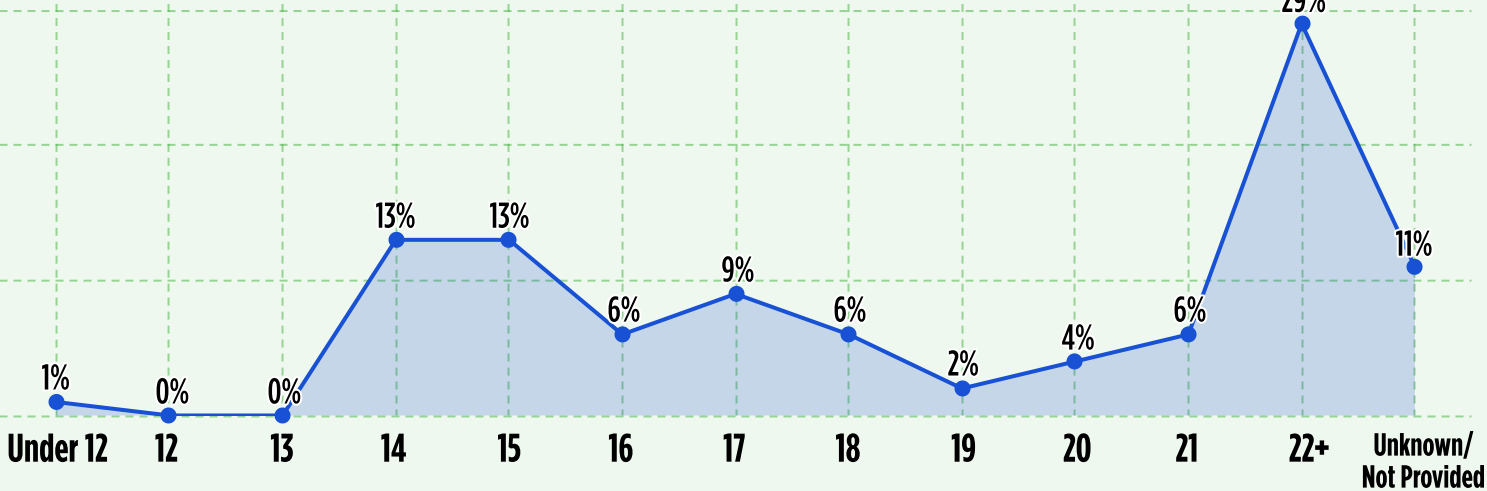


17%  
Youth/Family Services

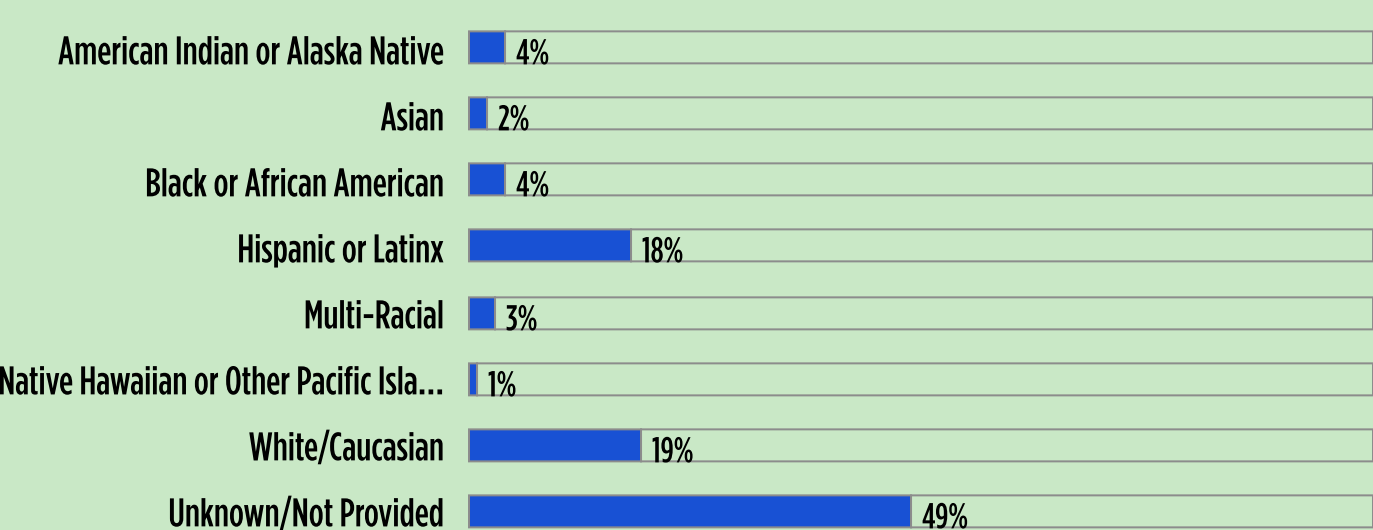
### Sex



### Age



### Race and Ethnicity



FOR MORE INFORMATION VISIT [1800RUNAWAY.ORG/DATA](https://1800RUNAWAY.ORG/DATA)

FOLLOW @1800RUNAWAY ON INSTAGRAM, FACEBOOK, & THREADS OR @NATIONALRUNAWAYSAFELINE ON TIKTOK & YOUTUBE