



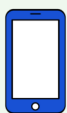
# National Runaway Safeline CRISIS SERVICES SNAPSHOT

DATA COLLECTED JANUARY 1, 2024 - DECEMBER 31, 2024

## OKLAHOMA

TOP 5 COUNTIES: OKLAHOMA (24%), TULSA (16%), CLEVELAND (7%), PAYNE (4%), STEPHENS (3%)

Total Crisis Contacts  
**318**



Hotline Calls  
31%



Live Chats  
58%



Texts  
11%

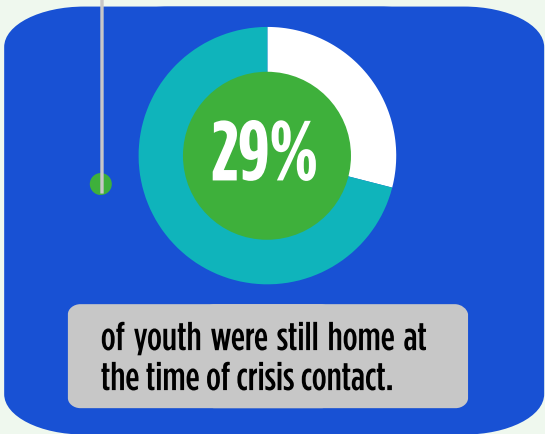


Emails  
<1%



Forum Posts  
0%

13 Home Free Tickets Issued



### Youth Status at Time of Contact

42%	Youth In Crisis	14%	Runaway
22%	Contemplating Running	4%	Asked to Leave
18%	Homeless	0%	Suspected Missing

### Top Issues



73%  
Family Dynamics



39%  
Economics



32%  
Transportation

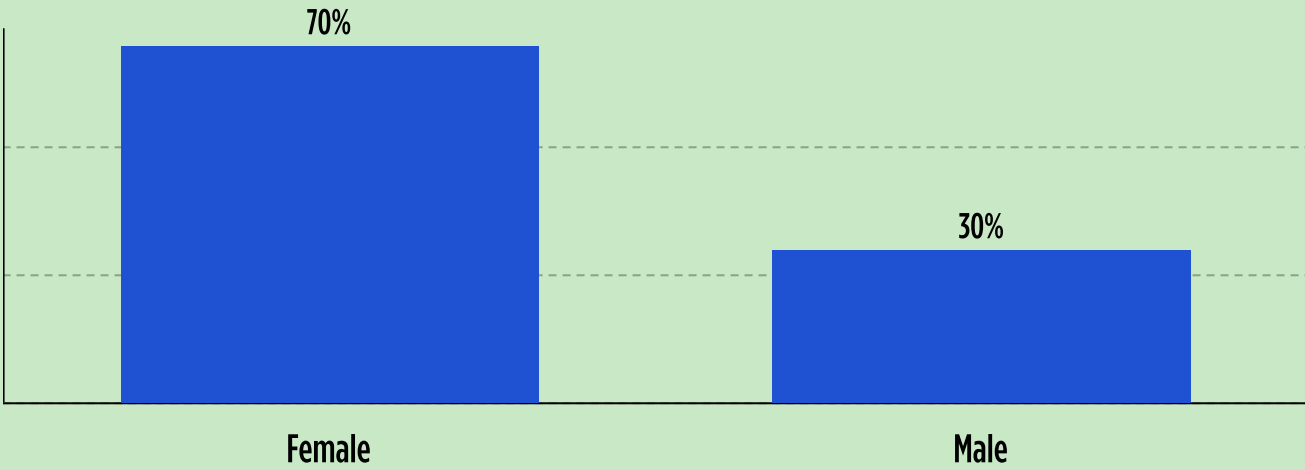


23%  
Youth/Family Services

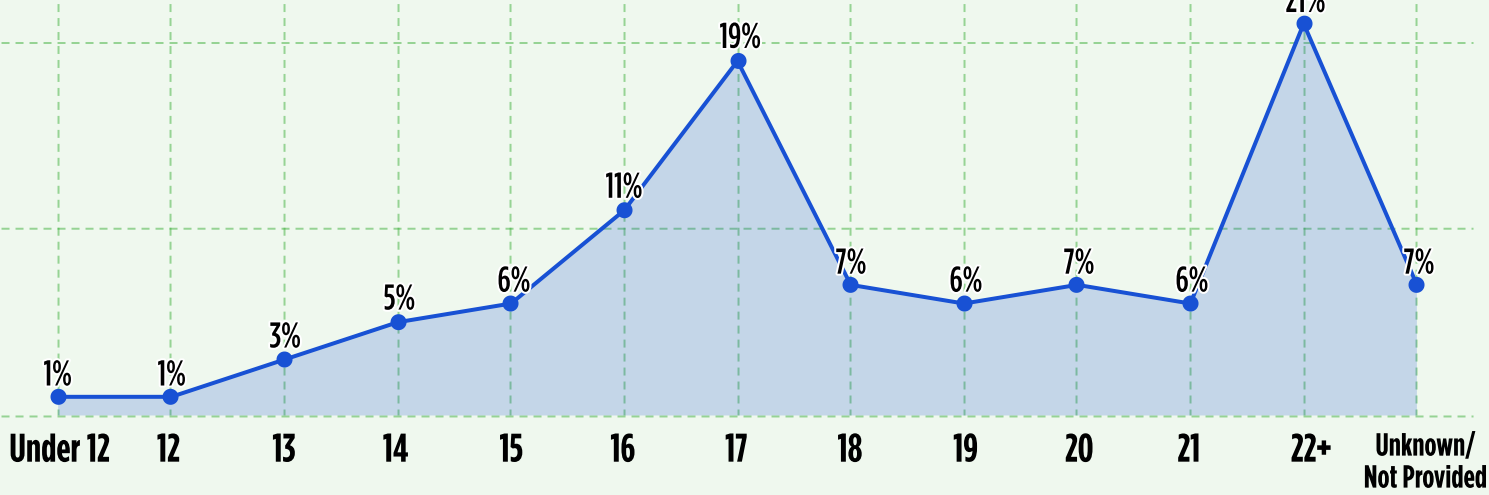


23%  
Emotional/Verbal Abuse

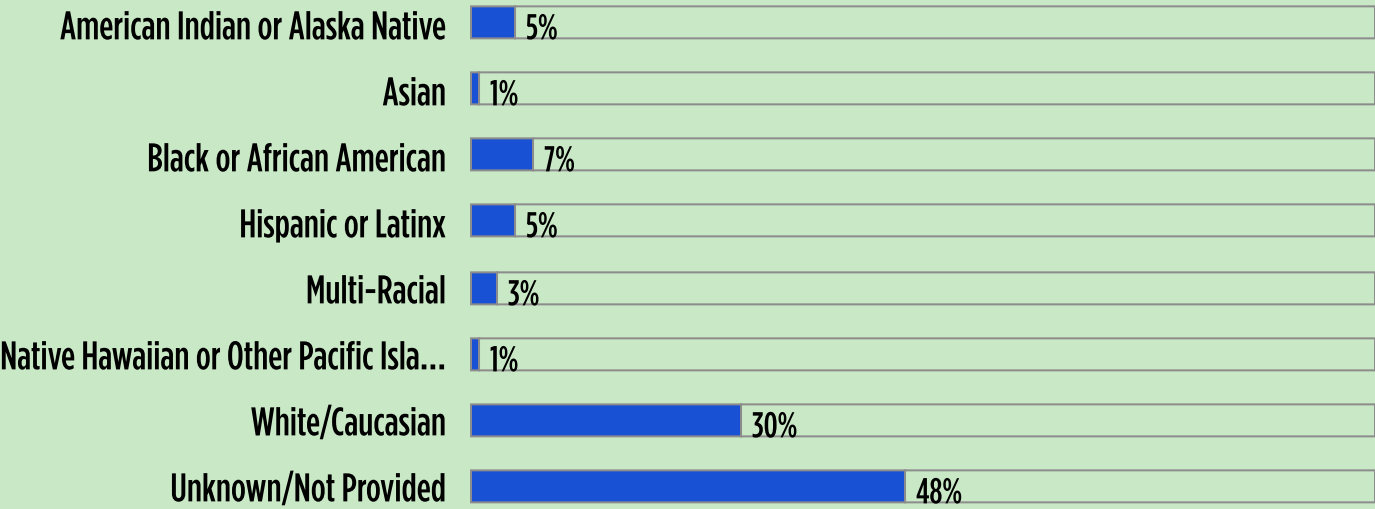
### Sex



### Age



### Race and Ethnicity



FOR MORE INFORMATION VISIT [1800RUNAWAY.ORG/DATA](https://1800RUNAWAY.ORG/DATA)

FOLLOW @1800RUNAWAY ON INSTAGRAM, FACEBOOK, & THREADS OR @NATIONALRUNAWAYSAFELINE ON TIKTOK & YOUTUBE